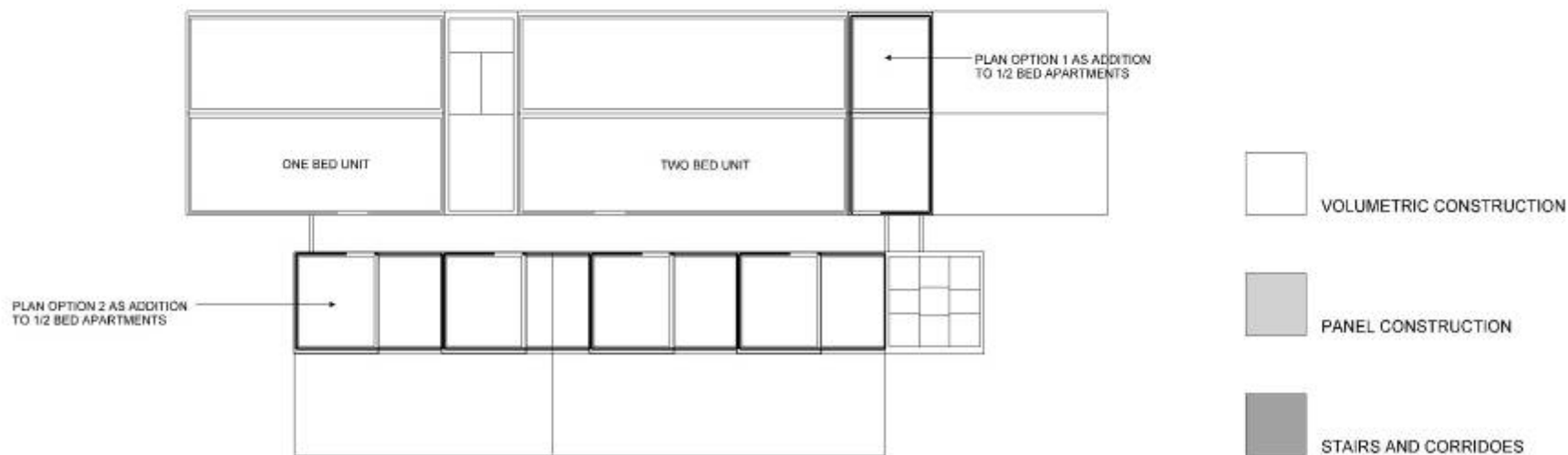
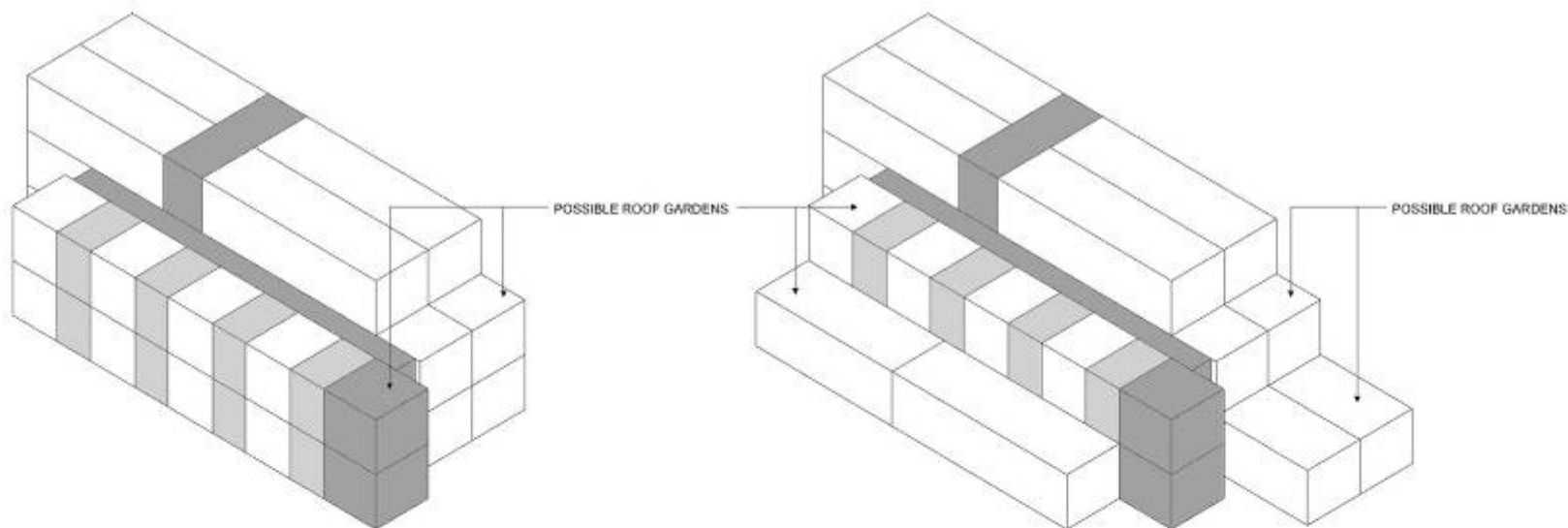


COMBINATION OF DEMOUNTABLE MICRO FLAT UNITS AND 1 & 2 BED UNITS - 1

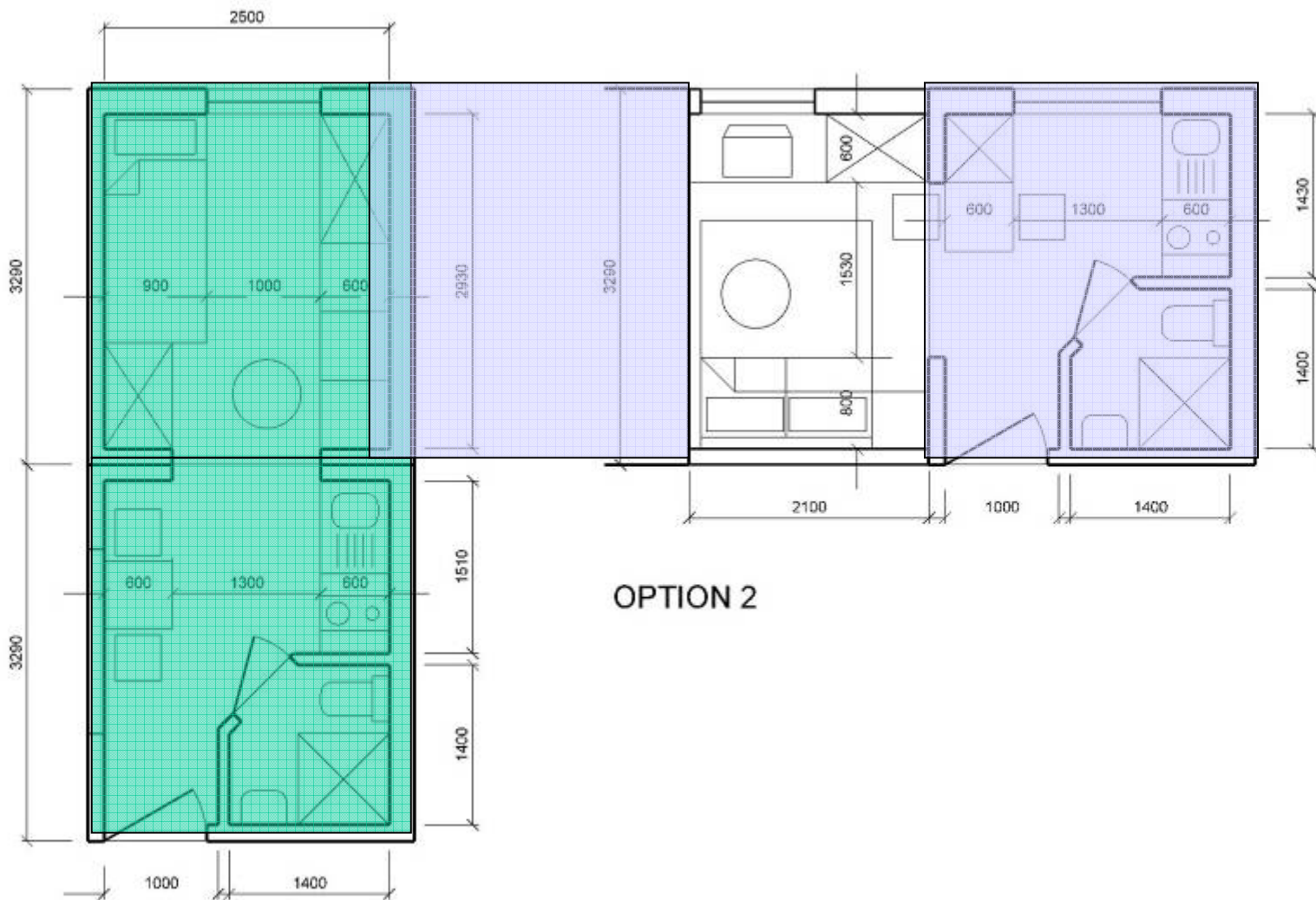






COMBINATION OF DEMOUNTABLE MICRO FLAT UNITS AND 1 & 2 BED UNITS - 2





OPTION 1

OPTION 2

DEMOUNTABLE MICRO FLAT LAYOUT \_ SCALE 1:50









1 BED UNIT 51 SQM  
2 BED UNIT 64 SQM





1 BED UNIT 30 SQM  
2 BED UNIT 45 SQM



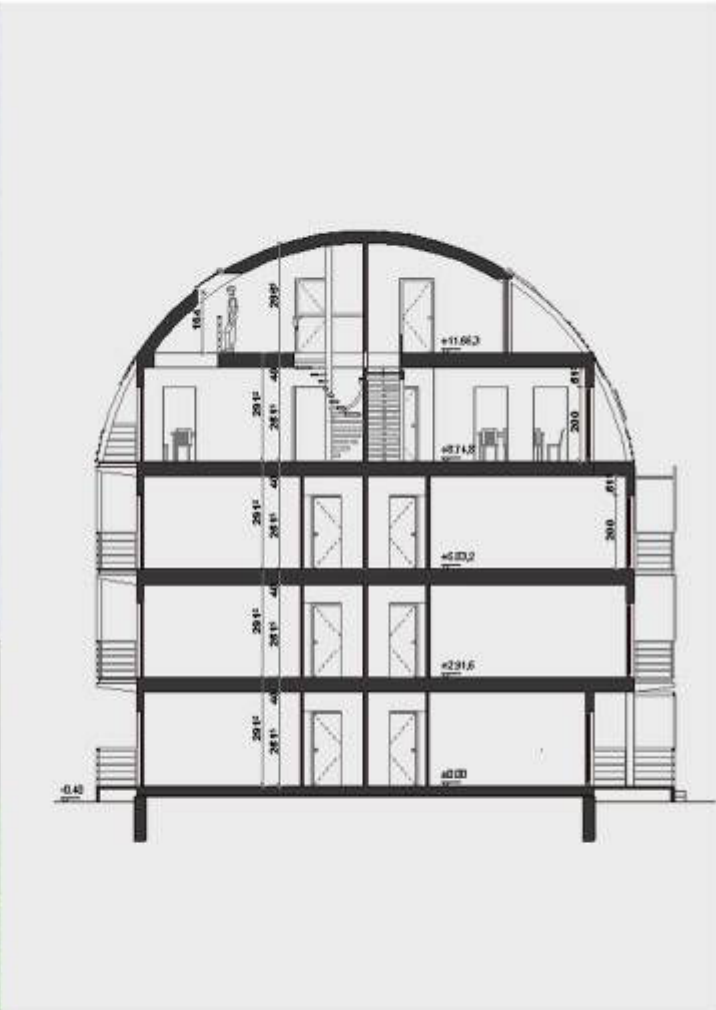
FREE-DOM SYSTEMS DEVELOPMENT

OPTION 4 - FOR STUDENTS/KEY WORKERS

1:100







FREE-DOM SYSTEMS DEVELOPMENT

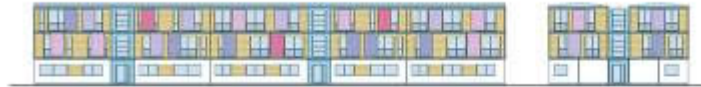
POSSIBALE ELEVATION & SECTION



# Free-Dom Systems UK



## Wyndham Road



Middlesex House, 130 College Road, Harrow, Middlesex, HA1 1BQ, UK  
Tel: +44 (0)208 861 1444 Fax: +44 (0)208 424 0851 E: Free-Dom@pcko.co.uk  
Free-Dom Systems UK is the sole representative of the BIMBA Free-Dom building system in the UK  
Free-Dom Systems UK is one of the trading names for PCKO Ltd - registered in England and Wales Reg No 2677288

Modular design  
Offsite manufacturing





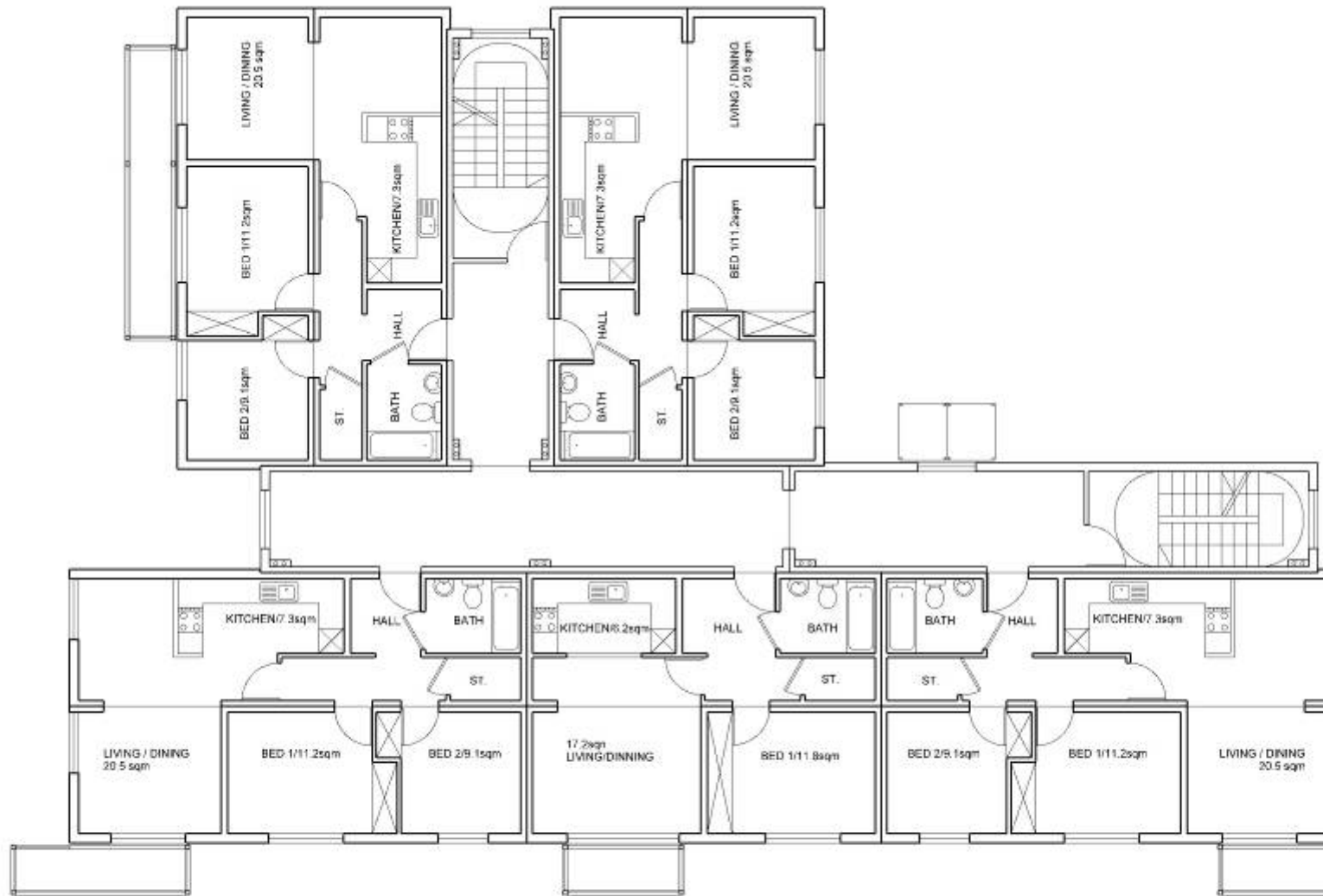












ARCHITECTS URBAN DESIGNERS MASTER PLANNERS INTERIOR DESIGNERS

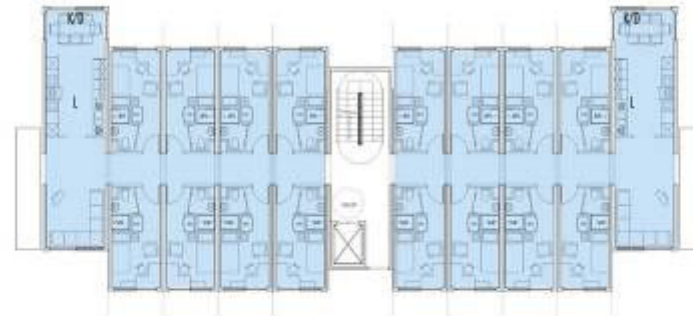
LINGHAM STREET SITE  
 TYPICAL FLOOR PLAN (ALT 2)

MIDDLESEX HOUSE 130 COLLEGE ROAD HARROW MIDDLESEX HA1 1RQ TEL 020 88610444

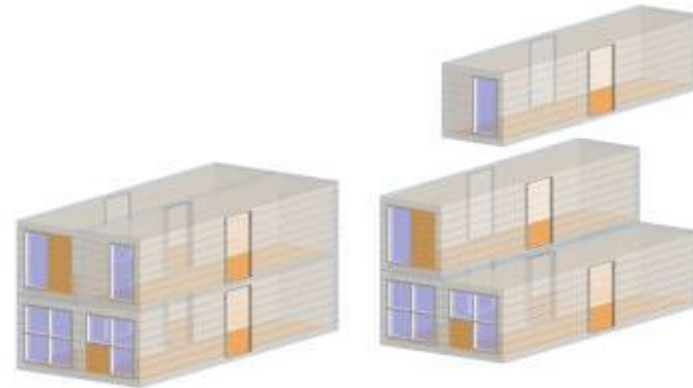
REF	01.04	SCALE	1:100
PROJ			
THEM	0320/SK20		
DATE		DRAWN	
CHECKED		DATE	



## Volumetric concept - Student Accommodation



Total 16 No. rooms per floor











## PCKO comes out on top in townhouse design contest

Architect's versatile solution wins David Wilson Homes' eScape competition – and will soon be built in Kent

by Josephine Smit

PCKO ARCHITECTS has won the David Wilson Homes eScape housing design competition to create a fresh model for a townhouse.

The results were announced this week in central London at the Futures Home convention, which was sponsored by *Building*. The contest attracted nearly 650 practices. It was promoted by David Wilson Homes in association with Design for Homes and the Wood for Good campaign.

PCKO was chosen from a shortlist of three by a panel of judges including interior designer Laurence Lewelyn-Bowen and English Partnerships strategy director Trevor Beattie.

PCKO created a new model for the townhouse with its design of two- or three-storey homes all with a central atrium.

PCKO's design addressed a central problem of the conventional townhouse: the shortage of space on the ground floor, which often

necessitates part of the living space being pushed up to the first-floor.

The PCKO solution was to have the open-plan living space all ground floor extended and given added visual impact and daylight by the incorporation of a double height atrium, which it called a "light court".

On the first floor two bedrooms were located on either side of the "light court". A further bedroom was sited above one of the first-floor bedrooms.

The wow-factor of the light court and the potential to create varied street scenes, by fronting roads with either two-storey or three-storey section of the house convinced the judging panel.

"Townhouses tend to have more space in total, but less space per floor," said David Birkbeck, chief executive of Design for Homes. "This design overcomes that by offering sensational spaces on the first two floors."

Lewelyn-Bowen added: "Buyers often criticise new homes for their



PCKO's design can create an attractive and varied streetscape and, above, the interior space where a central atrium brings in daylight

low ceilings and dark rooms. This design refutes that, and offers a contemporary romanticism with its tower and courtyard."

David Wilson Homes has agreed to build townhouses using the winning design. Group development director James Wilson said that runners-up Cole Thompson and Rider Sale also impressed the judges.

The householder will work with PCKO in Sittingbourne, Kent. The houses will be built using modern methods, including timber frame and roof cassette systems. "The winning design demonstrates that simple elements can be put together to create exciting architecture," said Charles Trevor, managing director of Wood for Good.

# Sustainable construction: Moving construction away from the site?

European platform:

- Close link between design, research, manufacturing, marketing
- Coordination of standards and legislation, new approval system.
- high quality
- Sophisticated design
- Fast production
- Short construction
- Minimum impact on environment
- Flexibility, demontability